

The Complete Nittan Fire Detection Range Product Range



optimum fire safety systems solutions



NITTAN

Issue 3



Business Overview

The Nittan Group has been at the forefront of the fire protection industry since 1954 and has sales, R&D and manufacturing bases in Japan, China, Sweden and the UK.

Nittan Europe was established in 1972 and has grown to become a major player in the fire protection industry. With the extensive support facilities of our Tokyo parent company, Nittan Europe now supplies in excess of 500,000 detectors per year, all of which are made to marine standard for exceptional quality.

Our latest breed of sophisticated Sensortec and Evolution analogue addressable and conventional fire detectors and ancillary products are sold worldwide.



An advanced, premium fire system featuring analogue addressable and conventional fire detectors, with 254 addresses per loop. Evolution combines extremely reliable fire detection with a very high degree of protection against unwanted false alarms. Its advanced, highly flexible protocol, is uniquely resistant to noise and allows for substantial amounts of information to be transmitted at high speed.



Established for over 25 years, our Sensortec brand - also known as the AS range - has gained an excellent reputation for reliability and ease of installation. It features extremely reliable analogue addressable and conventional detectors, sounders and beacons.

Contents

Business Overview	1
<hr/>	
Evolutional Conventional Products (EVC)	3-8
Smoke and Heat Detectors	3
Bases	4
Audio Visual Alarm Devices	5-6
Manual Call Points	6
Ancillary Products	7
Intrinsically Safe Equipment	8
<hr/>	
Evolution Analogue Addressable Products (EV)	9-18
Smoke and Heat Detectors	9
Bases	10
Audio Visual Alarm	11-12
Manual Call Points	12
Modules	13
Ancillary Products	14
Xtralis and Osid Products	15
Accessories	16-18
Industrial Products	18
<hr/>	
Sensortec Retrofit Products	19-22
Smoke and Heat Detectors	19
Conventional Bases	20
Bases	21
Isolators	21
<hr/>	
Manual Call Points	21
Modules	22
<hr/>	
Technical Specification	23-26
Evolution Conventional	23
Evolution Addressable	24-25
Sensortec Retrofit	26



Evolution Conventional Smoke and Heat Detectors



- Dual Optical Detector Reduces False Alarms
- Omniview 360° LED
- Internal Alarm Current Limiting Resistor
- Wide Operational Voltage Range (16v-32v)

EVC-DP Dual Optical Detector

Part No. F02-82215

Operating Voltage	16v-32v
Operating Current	Iquiescent: 50µA Ialarm: 50mA
Standard Alarm Indication	EN54-7:2000 + A1:2002 Omniview 360° LED



- Omniview 360° LED
- Internal Alarm Current Limiting Resistor
- Wide Operational Voltage Range (12v-32v)
- Optical Detector

EVC-P Optical Detector

Part No. F02-82200

Operating Voltage	12v-32v
Operating Current	Iquiescent: 50µA Ialarm: 50mA
Standard Alarm Indication	EN54-7:2000 + A1:2002 + A2:2006 Omniview 360° LED

EVC-DP with award winning Dual Optical Technology:

- Reduces false alarms caused by non-combustion products
- Internal current limiting resistor for fewer base variants
- 360° OMNIVIEW LED indicator for visible indication of operation
- Compatible with Nittan UB-4 and STB-4SE bases



- 62°C and 92°C Heat Detectors
- Omniview 360° LED
- Internal Alarm Current Limiting Resistor
- Wide Operational Voltage Range (11v-32v)

EVC-H-A2S Heat Detector

Part No. F04-82505, 62°C

EVC-H-CS Heat Detector (High Temp)

Part No. F04-82507, 92°C

Operating Voltage	11v-32v
Operating Current	Iquiescent: 50µA Ialarm: 50mA
Standard Alarm Indication	EN54-5:2000 + A1:2002 Omniview 360° LED

**Protective Cage Available
See Page 17**



- Omniview 360° LED
- Internal Alarm Current Limiting Resistor
- Wide Operational Voltage Range (12v-32v)
- Dual Band IR Flame Detector

EVC-IR Dual Band IR Flame Detector

Part No. F04-60044

Operating Voltage	12v-32v
Operating Current	Iquiescent: 100µA Ialarm: 50mA
Standard Alarm Indication	EN54-10:2001 + A1:2005 Omniview 360° LED



- Detector Mounting Base with Schottky Diode

UB-4SD Detector Mounting Base

Part No. F03-83510

Product Type	Universal base for EV Detectors
--------------	---------------------------------



STB-4SE-SD Deep Base with Schottky Diode

Part No. F03-82302

Product Type	Sawwire Base for EV Detectors
--------------	-------------------------------



- Sawwire Base for EV Detectors

STB-4SE-SW-EV Sawwire Base

Part No. F03-84010

Product Type	Sawwire base for EV Detectors
--------------	-------------------------------



- Universal Mounting Base Standardised Across Entire Nittan Group Worldwide

UB-4 Detector Mounting Base

Part No. F03-83500

Product Type	Universal base for EV Detectors
--------------	---------------------------------



- Deep Base for EVC Detectors

STB-4SE Deep Base

Part No. F03-82300

Product Type	Sawwire Base for EV Detectors
--------------	-------------------------------



- 150mm (6") 24Vdc EN54-3

Alarm Bell 150mm (6")
Part No. F06-61023

Operating Voltage	24Vdc
-------------------	-------



- Alarm Bell/Strobe

StroBell Combination
Part No. F06-61200

Operating Voltage	24Vdc
-------------------	-------



- 24Vdc W/P EN54-3

Alarm Bell 200mm (8")
Part No. F06-61024

Operating Voltage	24Vdc
-------------------	-------



- Excel Base Sounder with Cover

Banshee Base
Part No. F06-82500
Banshee Base Cover
Part No. F06-82501

Operating Voltage	24Vdc
-------------------	-------



- Sounder Capsule Red

Banshee EXCEL Sounder
Part No. F06-82520

Operating Voltage	24Vdc
-------------------	-------



- Sounder Capsule Red D/B
- IP66

Banshee EXCEL Sounder D/B
Part No. F06-82525

Operating Voltage	24Vdc
-------------------	-------



- Sounder/Strobe

EXCEL LITE Xenon Red Sounder
Part No. F06-82510

Operating Voltage	24Vdc
-------------------	-------



- Sounder/Strobe
- IP66

EXCEL LITE Xenon Red Sounder D/B
Part No. F06-82515

Operating Voltage	24Vdc
-------------------	-------



- 24Vdc Red

Xenon Beacon
Part No. F06-82550

Operating Voltage	24Vdc
-------------------	-------



- Conventional and Savewire Manual Call Point
- STI RESET Housing-IP24 or IP67
- Internal Alarm Current Limiting Resistor
- Wide Operational Voltage Range (12v-28v)
- Includes back box and mounting plate. (allows both flush and surface mounting)

RP-RS1-05/NTN
Savewire Manual Call Point
Part No. F06-62050

RP-RS1-01/NTN
Conventional Manual Call Point
Part No. F06-62018

WRP-R-01
Waterproof Manual Call Point
Part No. F06-62009

**Call Point Stoppers & Sounder
Cages Available**
See Page 17



Evolution Conventional Ancillary Products



- Intelligent motorised beam head
- Ground level control
- Fast commissioning
- Ultra low power usage (3.5ma in normal service)
- Ip65 rating
- Up to 100m range with extension kit options

EVC-Firebeam+ Beam Detector Part No. F05-83260

Operating Current Standard

Quiescent: 460µA / lalarm (LED ON) 5.2mA
EN54-20

**Protective Cage Available
See Page 17**



- Economical, Single or Dual Area Aspirated 'Fire' Detection
- 1 or 2 Sampling Pipes – Each Up to 50m in Length
- Uses Conventional or Analogue Addressable Detectors (Not Supplied)
- Detection Element Can be Serviced or Replaced
- Rugged IP65 Enclosure



- Economical, Single or Dual Area Aspirated 'Fire' Detection
- 1 or 2 Sampling Pipes – Each Up to 100m in Length
- Coverage Up to 1,500m at Class
- 3 User Configurable Alarm Levels Per Channel
- Integral Display and Programmer
- Rugged IP65 Enclosure
- Single, Redundant or Coincidence Detection Strategies

EVC-ASD1 Aspirating Smoke Detector Single Channel

Part No. F05-83237

EVC-ASD 2 Aspirating Smoke Detector Dual Channel

Part No. F05-83238

Operating Current Standard

Quiescent: 460µA / lalarm (LED ON) 5.2mA
EN54-20

EVC-LASD1 Aspirating Smoke Detector Single Channel

Part No. F05-83239

EVC-LASD 2 Aspirating Smoke Detector Dual Channel

Part No. F05-83240

Operating Current Standard

Quiescent: 460µA / lalarm (LED ON) 5.2mA
EN54-20



- Intrinsically Safe Call Point

Intrinsically Safe Call Point

Part No. F06-61011

Sensor Type	Manual Call Point
Operating Voltage	24v
Standard	EN54-11 + ATEX
Alarm Indication	None



- Intrinsically Safe Optical Detector
- Nittan Y Type Chamber
- Omniview 360° LED
- Wide Operational Range (12v-32v)
- Limited to 28v
- External Barrier
- Use UB-4-IS Base or EV-SPB-IS Base

EVC-PY-IS Intrinsically Safe Optical Detector

Part No. F02-83300

UB-4-IS Mounting Base

Part No. F03-83022

Sensor Type	Optical Detector
Alarm Voltage	Low Quiescent Current - 50µA
Operating Current	Alarm Current <50mA @ 24v (externally limited by IS barrier)
Standard	EN54-7:2000 + A1:2002 + A2:2006 and ATEX Certified
Alarm Indication	Omniview 360° LED



- FlashDome IS (ATEX) Red 24Vdc

Beacon

Part No. F06-82540

Operating Voltage	24v
-------------------	-----



KFD0-CS-EX1.5 P Galvanic Isolator for Detector or Manual Call Point

Part No. F05-83220

KFD0SD2 EX1.1045 Single Channel Sounder Circuit

Part No. F05-83280

KFD0SD2 EX2.1045 Two Channel Sounder Circuit

Part No. F05-83285



- IS28 Banshee MTMK5100dBA,
ATEX, IECEx (Group II)

Sounder

Part No. F06-82530

Operating Voltage	24v
-------------------	-----



- For Galvanic isolator

EC0-90-PC Enclosure

Part No. F05-83221



Evolution Analogue Addressable Smoke and Heat Detectors



- Optical Detector
- Evolution FSK Protocol
- EEPROM Addressed (Programmer)
- RIL and Base Control Outputs



- Dual Optical Technology Reduces False Alarms
- Evolution FSK Protocol
- EEPROM Addressed (Programmer)
- RIL and Base Control Outputs

EV-P Optical Detector

Part No. F14-82100

Operating Voltage	20v-35v
Operating Current	Iquiescent: 200µA Ialarm: (LED ON) 5.2mA
Standard	EN54-7:2000 + A1:2002 + A2:2006
Alarm Indication	Omniview 360° LED

EV-DP Dual Optical Detector

Part No. F14-82105

Operating Voltage	20v-35v
Operating Current	Iquiescent: 200µA Ialarm: (LED ON) 5.2mA
Standard	EN54-7:2000 + A1:2002 + A2:2006
Alarm Indication	Omniview 360° LED



- Optical Smoke and 54°C (A1R) Heat Sensors in One Housing
- Evolution FSK Protocol
- EEPROM Addressed (Programmer)
- RIL and Base Control Outputs



- 54°C and 92°C Heat Detectors
- Evolution FSK Protocol
- EEPROM Addressed (Programmer)
- RIL and Base Control Outputs

EV-PH Optical Smoke and Heat Detector

Part No. F20-82400

Operating Voltage	20v-35v
Operating Current	Iquiescent: 200µA Ialarm: (LED ON) 5.2mA
Standard	EN54-7:2000 + A1:2002 + A2:2006 EN54-5:2000 + A1:2002
Alarm Indication	Omniview 360° LED

EV-H-A1R Heat Detector

Part No. F15-82200, 54°C

EV-H-CS Heat Detector (High Temp)

Part No. F15-82201, 92°C

Operating Voltage	20v-35v
Operating Current	Iquiescent: 200µA Ialarm: (LED ON) 5.2mA
Standard	EN54-5:2000 + A1:2002
Alarm Indication	Omniview 360° LED



- Optical Detector with Built in Sounder
- Sounder ~85dB(A) @ ~3.1mA
- Drive Output for Dedicated EV-PSBCN
- Evolution FSK Protocol EEPROM Addressed (Programmer)

EV-PS Optical Detector with In-Built Sounder

Part No. F20-82501

Operating Voltage	20v-38v
Operating Current	Iquiescent: 200µA Ialarm: (LED ON) 5.2mA Ialarm: (SDR ON) 3.1mA
Standard	EN54-3:2001 + A1:2002 + A2:2006 EN54-7:2000 + A1:2002 + A2:2006
Alarm Indication:	Omniview 360° LED



- Dual Optical Technology Plus Heat Sensor Reduces False Alarms
- Evolution FSK Protocol
- EEPROM Addressed (Programmer)
- RIL and Base Control Outputs

EV-DPH-A2R Dual Optical & Heat Sensor

Part No. F14-82106

EV-DPH-CS Dual Optical & Heat Sensor

Part No. F14-82107

Operating Voltage	20v-35v
Operating Current	Iquiescent: 200µA Ialarm: (LED ON) 5.2mA
Standard	EN54-7:2000 + A1:2002 + A2:2006 EN54-5:2000 + A1:2002
Alarm Indication	Omniview 360° LED



- Universal Mounting Base Standardised Across Entire Nittan Group Worldwide



- Deep Detector Mounting Base

UB-6-EV Detector Mounting Base
Part No. F03-83521

Product Type	Universal base for EV Detectors
--------------	---------------------------------

STB-4SE-EV Base
Part No. F03-84005

Product Type	S/C Isolator
Operating Current	I _q 300mA
Operation Indication	I Operated 15mA Yellow LED



- Base Mounted "Dumb" Isolator
- +ve Isolator*



- Single Gang Box Mounted "Dumb" Isolator
- +ve Isolator*

SCI-5 Base S/C Isolator
Part No. F16-81441

Product Type	S/C Isolator
Operating Current	I _q 300mA
Operation Indication	I Operated 15mA Yellow LED

SCI-6 Boxed S/C Isolator
Part No. F16-81440
with Backbox
Part No. F16-81442

Product Type	S/C Isolator
Operating Current	I _q 300mA
Operation Indication	I Operated 15mA Yellow LED



- -ve Isolator Base*

NEW PRODUCT



- -ve Isolator Base*

NEW PRODUCT

EV-B-SCI Detector Base With Short Circuit Isolator
Part No. F03-83605

Operating Voltage	22v-38v
Operating Current	I _q 60µA I Operated 13mA
Standard	EN54-17:2005 / AC:2007

EV-DIN-SCI DIN Rail Mounting Circuit Isolator
Part No. F03-83620

Operating Voltage	22v-38v
Operating Current	I _q 60µA I Operated 13mA
Standard	EN54-17:2005 / AC:2007
Operation Indication	Short Circuit Indicating LED

* note +ve and -ve isolator styles cannot be mixed on a system. Contact Nittan Technical Support for more details and information on panel compatibility.
www.nittan.co.uk • tel: +44 (0) 1483 769555 • email: sales@nittan.co.uk



- Evolution FSK Protocol
- EEPROM Addressed (Programmer)
- 12 Tones DIP Switch Selected (3 Approved Tones)



- Evolution FSK Protocol
- EEPROM Addressed (Programmer)
- 12 Tones DIP Switch Selected (3 Approved Tones)
- Replaces EV-ABS Sounder

**EV-SDR Base Sounder
Part No. F16-82100**

Operating Voltage
Operating Current

24-38V d.c.
Iquiescent: 200µA
Ialarm: (Low O/P) 4mA
Ialarm: (High O/P) 6mA
EN54-3:2001 + A1:2002 + A2:2006
Type A Indoor Sounder

Standard

**EV-SDR Sounder
Part No. F16 - 82110**

Operating Voltage
Operating Current

24-38V d.c.
Iquiescent: 200µA
Ialarm: (Low O/P) 4mA
Ialarm: (High O/P) 6mA
EN54-3:2001 + A1:2002 + A2:2006
Type A Indoor Sounder

Standard



- Combined Sounder and Beacon with Integral Base
- Evolution FSK Protocol
- EEPROM Addressed (Programmer)



- Combined Sounder and Beacon with Integral Base
- Evolution FSK Protocol
- EEPROM Addressed (Programmer)

**EV-AV2 Base Sounder/ Beacon
Part No. F14-85011**

Operating Voltage
Operating Current

24v-35v
Iquiescent: 200µA
Ialarm: (Low O/P - SDR and BCN active) 9mA
Ialarm: (High O/P - SDR and BCN active) 12mA
EN54-3:2001 + A1:2002 + A2:2006

Standard

**EV-AV2 Sounder/ Beacon
Part No. F14-85012**

Operating Voltage
Operating Current

24v-35v
Iquiescent: 200µA
Ialarm: (Low O/P - SDR and BCN active) 9mA
Ialarm: (High O/P - SDR and BCN active) 12mA
EN54-3:2001 + A1:2002 + A2:2006

Standard



- Beacon with Integral Base
- Non Addressed - Dedicated for use with EV-PS.



- IP 65 rated
- Type B Outdoor Beacon With/ Without -ve Isolator*
- EEPROM Addressed (Programmer)
- FSK Signalling Protocol

**EV-PSBCN Base Beacon
(for use with EV-PS)
Part No. F16-82016**

Operating Voltage
Operating Current

24v-35v
Iquiescent: 0µA
(BCN active) 5mA*

**EV-HIOP-BCN High Output Beacon
Part No. F16-82056
EV-HIOP-BCN-SCI High Output
Beacon With -ve Side Isolator
Part No. F16-82055**

Operating Voltage
Operating Current
Standard

24v-38v
Quiescent: 200µA / Ialarm 20mA
EN54-17:2005 / AC:2007
EN54-23:2010

Evolution Analogue Audio Visual Alarm Devices Manual Call Points



- IP 65 rated
- 32 Tones DIP Switch Selected (3 Approved Tones)
- EEPROM Addressed (Programmer)
- FSK Signalling Protocol

EV-HIOP-SDR High Output Sounder

Part No. F16-82061

EV-HIOP-SDR-SCI High Output Sounder with -ve Isolator*

Part No. F16-82060

Operating Voltage	24-38V
Operating Current	Quiescent: 200µA / lalarm 20mA
Standard	EN54-3:2001 + A1:2002 + A2:2006 EN54-17:2005 / AC:2007
Output	100dB @ 1m



- IP 65 rated
- 32 Tones DIP Switch Selected (3 Approved Tones)
- EEPROM Addressed (Programmer)
- FSK Signalling Protocol

EV-HIOP-SB High Output Sounder Beacon

Part No. F16-82051

EV-HIOP-SB-SCI High Output Sounder Beacon with -ve isolator*

Part No. F16-82050

Operating Voltage	24-38V
Operating Current	Quiescent: 200µA / lalarm 20mA
Standard	EN54-3:2001 + A1:2002 + A2:2006 EN54-17:2005 / AC:2007 EN54-23:2010
Output	100dB @ 1m



- STI "Reset" Housing
- IP24 Rated
- DIL Switch Addressed
- Includes Backbox & RF Wall Plate

EV-MCP RS RESET Surface Mounting Manual Call Point

Part No. F16-82003

EV-MCP2-SCI-IP24

Part No. F16-82200

- -ve Isolator*

Operating Voltage	20v-35v
Operating Current	lquiescent: 200µA lalarm: 2.2mA
Standard	EN54-11:2001 + A1:2005 EN54-17:2005 / AC:2007
Alarm Indication	RED LED



- STI "Reset" Housing
- IP67 Rated
- DIL Switch Addressed

EV-MCPWP RESET Waterproof Manual Call Point

Part No. F16-82004

EV-MCP2-SCI-IP67

Part No. F16-82205

- -ve Isolator*

Operating Voltage	20v-35v
Operating Current	lquiescent: 200µA lalarm: 2.2mA
Standard	EN54-11:2001 + A1:2005 EN54-17:2005 / AC:2007
Alarm Indication	RED LED

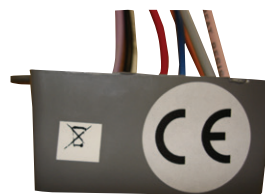


- Housing, KAC World Series MCP Cradle
- 1 x Class B Input
- EEPROM Addressed (Programmer)

EV-Mini I/P Mini Input Module

Part No. F16-82025

Operating Voltage	20v-35v
Operating Current	lquiescent: 460µA lalarm: (No LED) 460µA (LED ON) 4.5mA
Standard	EN54-18:2005 / AC:2007
Alarm Indication	Optional RED LED



- Relay Unit Suitable for Switching 24v – 240v
- Non Addressed

EV-240v MRA Mains Switching Relay

Part No. F16-82024

Input Voltages	24V dc, 24V ac, 120V ac, 240V ac
Contact Ratings	8A @ 28v dc 10A @ 28V ac and 120V ac 5A @ 240V ac (resistive)
Standard	EN54-18:2005 / AC:2007

* note +ve and -ve isolator styles cannot be mixed on a system. Contact Nittan Technical Support for more details and information on panel compatibility.

www.nittan.co.uk • tel: +44 (0) 1483 769555 • email: sales@nittan.co.uk



Evolution Analogue Modules



- 1 x Class A or 2 x Class B Inputs
- EEPROM Addressed (Programmer)
- Housing Fits MK 2 Gang Pattress Box

EV-IP Input Module

Part No. F16-82033

Operating Voltage	20v-35v
Operating Current	Iquiescent: 500µA Ialarm: 4.5mA
Standard Alarm Indication	EN54-18:2005 / AC:2007 RED LED



- 1 x C/O Relay Contact
- EEPROM Addressed (Programmer)
- Housing fits MK 2 gang pattressbox
- Control Output for EV-240V MRA

EV-OP Output Module

Part No. F16-82027

Operating Voltage	20v-35v
Operating Current	Iquiescent: 500µA Ialarm: 4.5mA
Standard Alarm Indication	EN54-18:2005 / AC:2007 RED LED



- 2A@24v Relay Contacts
- 2 x Class B Input Circuits
- EEPROM Addressed (Programmer)
- Housing Fits MK 2 Gang Pattress Box

EV-SIO Single Input/Output Module

Part No. F16-82031

Operating Voltage	20v-35v
Operating Current	Iquiescent: 300µA Ialarm: 3mA
Standard Alarm Indication	EN54-18:2005 / AC:2007 RED LED



- 2 x Class B Input Circuits
- EEPROM Addressed (Programmer)
- Housing Fits MK 2 Gang Pattress Box

EV-ZMU Zone Monitor Module

Part No. F16-82023

Operating Voltage	20v-35v (Addressable loop) 21.9v-26.4v (Ext. PSU)
Operating Current	See Below
From addressable loop	Class B Iquiescent: 280µA
From External PSU	Class B Iquiescent: 14mA Class B Ialarm: 50mA / spur
Standard Alarm Indication	EN54-18:2005 / AC:2007 RED LED



- 2A@24v Relay Contacts
- Class B Notification Circuits
- EEPROM Addressed (Programmer)
- Housing Fits MK 2 Gang Pattress Box

EV-SCM Sounder Control Module

Part No. F16-82029

Operating Voltage	20v-35v
Operating Current	Iquiescent: 750µA Ialarm: 4.5mA
Standard Alarm Indication	EN54-18:2005 / AC:2007 RED LED

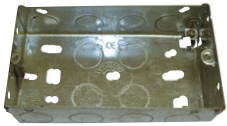


- Sounder Booster Module
- Non Addressed
- Housing Fits MK 2 Gang Pattress Box

EV-SBM Sounder Booster Module

Part No. F16-82028

Operating Voltage	From External PSU: 24v
Operating Current	From External PSU Iquiescent: 85mA Ialarm: 90mA + Sounder load (Max 15A)
Standard Alarm Indication	EN54-18:2005 / AC:2007 RED LED



- Use for Faceplate Style Modules
- UK Style Electrical Back Box



- 45mm Double Gang Plastic Surface Box
- Used for Surface mounting EV Double Gang Modules

Flush Mounting Box For EV Module

Part No. F05-83228

Plastic Surface Box

Part No. F05-83231



- Intelligent motorised beam head
- Ground level control
- Fast commissioning
- Ultra low power usage (3.5ma in normal service)
- Ip65 rating
- Up to 100m range with extension kit options

EV-Firebeam+ Beam Detector

Part No. F16-83000

Operating Current
Standard

Quiescent: 460µA / Alarm (LED ON) 5.2mA
EN54-20

Protective Cage Available
See Page 17





Ancillary Products & Xtralis and Osid Products



- Economical, Single or Dual Area Aspirated 'Fire' Detection
- 1 or 2 Sampling Pipes – Each Up to 50m in Length
- Uses Conventional or Analogue Addressable Detectors (Not Supplied)
- Detection Element Can be Serviced or Replaced
- Rugged IP65 Enclosure

EV-ASD1 Aspirating Smoke Detector Single Channel

Part No. F16-83100

EV-ASD 2 Aspirating Smoke Detector Dual Channel

Part No. F16-83110

Operating Current Standard

Quiescent: 460µA / Alarm (LED ON) 5.2mA EN54-20



- Economical, Single or Dual Area Aspirated 'Fire' Detection
- 1 or 2 Sampling Pipes – Each Up to 100m in Length
- Coverage Up to 1,500m at Class
- 3 User Configurable Alarm Levels Per Channel
- Integral Display and Programmer
- Rugged IP65 Enclosure
- Single, Redundant or Coincidence Detection Strategies

EV-LASD 1 Aspirating Smoke Detector Single Channel

Part No. F16-83200

EV-LASD 2 Aspirating Smoke Detector Dual Channel

Part No. F16-83210

Operating Current Standard

Quiescent: 460µA / Alarm (LED ON) 5.2mA EN54-20



- Continuous air sampling providing the earliest possible warning of an impending fire hazard
- Detectors come with multi-level warnings
- They are ideally suited to challenging environments such as utilities, oil & gas, etc

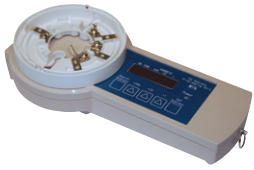
Xtralis Products



OSID

- Product range to support a variety of ranges and fields of view
- Superior rejection of dust and intruding solid objects
- Simple mounting and installation
- Dual wavelength smoke detection
- Tolerance of coarse alignment
- Large adjustment and wide viewing angles
- Four-wire detector interfaces
- Simple user display for alarm, fault and power status annunciation
- Configurable alarm thresholds

www.nittan.co.uk • tel: +44 (0) 1483 769555 • email: sales@nittan.co.uk



- Handheld Address Programmer
- Battery/18V DC Powered
- Simple Operation
- Robust Design
- Programmer Lead Port for Modules

EV-AD2-EXT
Part No. F17-78003



- Lead to Programme New EV Modules
- 1 Metre Long
- Flexible and Robust
- Not Suitable for Older EV Metal Box Modules

EV-Module Address Lead
Part No. F16-82034



- Used to Programming Address of EV-HIOP-SB(IC), and EV-HIOP-SDR(IC).
- Address Card in IP65 Base.

Universal Programming Lead
Part No. F16-82045



- Programming Adapter for the EV-AV2/SB Series (Sounder/Beacon)

EV-AVADAPT
Part No. F05-83235



- Spare Pins
- 10 Per Pack
- High Quality

Module Address Lead Spare Pin Kit
Part No. F16-82035

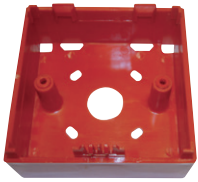


- Duct Detector Housing
- Quick and Simple Installation
- Pre-assembled Cable Entries
- Error Free Pipe Mounting
- Test Hole in Cover

UG-3 Duct Detector Housing
Part No. F05-83105
Requires 0.6m Pipe Venturi
Part No. F05-83111



STA-R1 Remote Indicator
Part No. F05-83200



- Spare Part

Back Box For STI MCP
Part No. F06-62007



Flush Wall Mounting Plate For STI MCP
Part No. F06-62005



- Spare Part

3 Way Terminal Tray For STI MCP
Part No. F06-62006



- Spare Part STI Model CI

Hinged Clear Cover For STI MCP
Part No. F06-62008



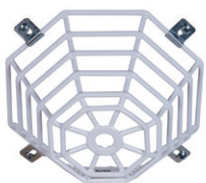
- Flush and Surface

STI Stopper

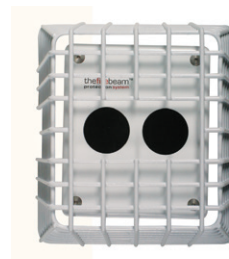


- Flush and Surface

Call Point Stopper



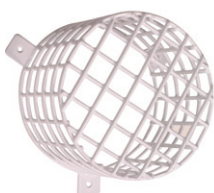
Detector Cage
Part No. 9604



Beam Controller Cage
Part No. 9862



Beam Head Cage
Part No. 9861



Sounder/Beacon Cage
Part No. 9614



- IP55 Rating
- Robust Design
- Easy Entry Cable Glands

IP55 Base Mounting Box Part No. F16-81373
Part No. F16-81372



Adjustable Mounting Box (for flame detector)
Part No. F07-63543



- Without Battery Back-up
- With Battery Back-up EN54 Compliant
- With Battery Back-up EN54 Certified

Power Supplies Contact Sales



Magnetic Door Holders
Floor Mounted 24V Part No. F05-83300
Wall Mounted 24V Part No. F05-83310
Wall Mounted 230v Part No. F05-83315



Linear Heat Systems Contact Sales



- Control Unit for OKB-3 Detector
- Compact Unit 125mm (W) x 208mm (L) x 55mm (H)

CPC-3 Control Panel
Part No. F09-66011

Zone Voltage	19v (DC- Max)
Power	AC 1000 - 240v
EOL	7K5, 1/4 w
Induction	Fault/ Fire/ Power
Relay O/P's (Status)	3 x C/O Contacts
Standard	ETL (UL STD 61010-1)



- Advanced, Premium Smoke Detector
- Scattering Light Detection
- Very Small - 40mm(W) x 40mm(L) x 45mm(H)
- High Degree of Protection Against Unwanted False Alarms
- Extremely Reliable Fire Detection
- Use with CPC-3 Control Unit

OKB-3 Smoke Detector
Part No. F09-66010

Detection Method	Scattering Light
Power Source	Between L and C DC19V (17 - 21V), 5mA
Consumption	Between P and C Max. DC12V 100mA resistance load
Sensitivity	50µA MAX (20V imposed)
Allowable Temp. Range	4%/m
Standard	-10°C - 65°C
	ETL (UL STD 61010-1)



Sensortec Retrofit Smoke and Heat Detectors



Sensortec features a range of high performance analogue addressable and conventional detectors, bases and modules, designed and built for longevity and reliability.

C = Conventional

A = Analogue



- Latest Generation Niffan Optical Chamber
- Omniview 360° LED
- Robust Fully Modulated AS Communications Protocol
- EEPROM Addressed (Address stored in on-board EEPROM, programmed by handheld programmer)
- WILL REPLACE ST-P-AS

ST-PY-AS Optical Detector

Part No. F14-82100

Sensor Type	Latest Generation Niffan Optical Chamber
Alarm Voltage	Low Quiescent Current - 500µA
Operating Current	Alarm Current (LED on) 5.2mA
Standard	EN54-7:2000 + A1:2002 + A2:2006
Alarm Indication	Omniview LED Indicator

A



- Optical Smoke Detector
- Omniview 360° LED
- S/C Alarm Characteristic
- Wide Operational Voltage Range (12v – 32v)

ST-P-OM

Optical Detector (Replaces ST-P)

Part No. F02-82220

Sensor Type	Optical Smoke Detector
Alarm Voltage	Low Quiescent Current - 50µA
Operating Current	Alarm Current 65mA @ 24v (externally limited)
Standard	EN54-7:2000 + A1:2002 + A2:2006
Alarm Indication	Omniview LED Indicator

C



- Thermistor Heat Sensor
- Robust Fully Modulated AS Communications Protocol
- DIL Switch Addressed

ST-H-AS Heat Detector

Part No. F15-81200

Sensor Type	Analogue Heat Detector
Alarm Voltage	Low Quiescent Current - 200µA
Operating Current	Alarm Current (LED on) 2mA
Standard	EN54-5:2000 + A1:2002
Alarm Indication	Red LED

A



- Wall or Base Mounted Sounder
- DIL Switch Addressed
- Robust Fully Modulated AS Communications Protocol

AS-ABS Base Sounder

Part No. F16-81563

Requires **UB4-EV-AB Base** Part No. F03-83020 or **Red Cover** Part No. F06-82411

Product Type	Analogue Sounder
Alarm Voltage	Low Quiescent Current - 200µA
Operating Current	Alarm Current (active) 7-10mA (Tone dependant)
Alarm Indication	None
	16 Alarm Tones + 1 Alert Tone

A



- Detector Mounting Base with Schottky Diode & Resistor



- Sawwire Base for ST Detectors

UB-4SDR-470 Mounting Base Part No. F03-83512

Product Type

Conventional Base for ST detectors



STB-4SE-SW-STD Sawwire Base Part No. F03-82401

Sensor Type

Sawwire Base for ST detectors



- Detector Mounting Base with Schottky Diode & Resistor



STB4-SE-12VRL

- Deep Base
- 12v or 24v Operation PCB Mounted Relay
- Latching Relays, Normally Energised, Failsafe Operation
- Volt Free C/O Contacts

STB4-SE-12VRL Latching Relay Base Part No. F03-82325

STB4-SE-24VRL Latching Relay Base Part No. F03-82326

Product Type

Conventional Base for ST detectors



Product Type

Latching Relay Base

Operation Voltage

12/24V



STB4-SE-12VR

- Deep Base
- 12v or 24v Operation PCB Mounted Relays
- Volt Free C/O Contacts



STB4-SE-12VR Relay Base Part No. F03-82320

STB4-SE-24VR Relay Base Part No. F03-82330

Product Type
Operation Voltage

Relay Base
12/24V



Product Type

Conventional Base for ST detectors





Sensortec Retrofit Bases, Isolators and Manual Call Points



STB4-SE-SDR470 Deep Base
Part No. F03-82342

Product Type	Conventional Base for ST detectors
--------------	------------------------------------

C

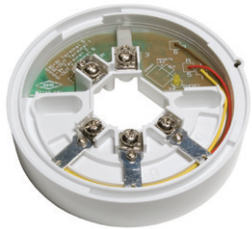


- Universal Mounting Base Standardised Across Entire Nittan Group Worldwide

UB-4 Detector Mounting Base
Part No. F03-83500

Product Type	Base for Analogue ST detectors
--------------	--------------------------------

A



- Base Mounted "Dumb" Isolator

SCI-5 S/C Isolator (Base)
Part No. F16-81441

Product Type	S/C Isolator
Operating Current	Iq 300mA I Operated 15mA
Operation Indication	Yellow LED

A



- Single Gang Box Mounted "Dumb" Isolator

SCI-6 S/C Isolator (Boxed)
Part No. F16-81440
Part No. F16-81442 with Backbox

Product Type	S/C Isolator
Operating Current	Iq 300mA I Operated 15mA
Operation Indication	Yellow LED

A



- STI Waterproof IP67 Housing MCP
- DIL Switch Addressed
- Robust Fully Modulated AS Communications Protocol

AS-MCP-WP Waterproof Manual Call Point
Part No. F16-82305

Product Type	Analogue MCP (IP67)
Alarm Voltage	Low Quiescent Current - 200µA
Operating Current	Alarm Current (LED on) - 2mA
Alarm Indication	Red LED

A



AS-MCP Manual Call Point
Part No. F16-82303

Product Type	Analogue MCP (IP24)
Alarm Voltage	Low Quiescent Current - 200µA
Operating Current	Alarm Current (LED on) - 2mA
Alarm Indication	Red LED

A



- Enclosure Only

AS Module IP56 Enclosure
Part No. F16-82037

A



- Battery Powered 18v DC
- Handheld
- Programmer for ST-PY-AS

MTM AS Programmer
Part No. F17-78002

A



- 1 Conventional Detector or Switch Zone with Wiring Monitored
- 1 C/O Volt-free Contact Output (support being CIE dependant)
- Rotary Address Switched

MCM-AS5
Monitoring / Control Module
Part No. F16-81540

Product Type: Analogue ZMU
Operating Current: (From Loop) Iq 6.2mA
Ia max. 20mA

A



- 1 Zone of Conventional Sounders
- Monitors External PSU
- Multiple Tones (Alarm and Alert)
- DIL Switch Addressed
- Rotary Address Switched

SCM-AS5
Sounder Control Module
Part No. F16-81530

Product Type: Analogue Sounder Controller
Operating Current: (From Loop) Iq 4.2mA
Ia 500µA

A



- 1 C/O Volt-free Contact Output
- Rotary Address Switched

1O-ASBOX Output Module
Part No. F16-81510

Product Type: Analogue O/P
Operating Current: (From Loop) Iq 350µA
Ia 500µA
Standard: EN54-18:2005/AC:2007

A



- 1 N/O Contact Input - Does Not Monitor Contact Wiring
- Rotary Address Switched

1I-ASBOX Input Monitor Module
Part No. F16-81500

Product Type: Analogue I/P
Operating Current: (From Loop) Iq 270µA
Ia 4mA
Standard: EN54-18:2005/AC:2007

A



Evolution Conventional Technical Specification

Description	Part Number	Operating Current	Standard	Alarm Indication
Smoke Detectors				
EVC-DP	F02-82215	Quiescent: 50µA / lalarm: 50mA	EN54-7:2000 + A1:2002	Omniview 360° LED
EVC-P	F02-82200	Quiescent: 50µA / lalarm: 50mA	EN54-7:2000 + A1:2002 + A2:2006	Omniview 360° LED
EVC-H-A2S	F04-82505	Quiescent: 50µA / lalarm: 50mA	EN54-5:2000 + A1:2002	Omniview 360° LED
EVC-H-CS	F04-82507	Quiescent: 50µA / lalarm: 50mA	EN54-5:2000 + A1:2002	Omniview 360° LED
EVC-IR	F04-60044	Quiescent: 100µA / lalarm: 50mA	EN54-10:2002 + A1: 2005	Omniview 360° LED
EVC-ASD 1	F05-83237		EN54-20:2006 + AC:2008	
EVC-ASD 2	F05-83238		EN54-20:2006 + AC:2008	
EVC-LASD 1	F05-83239		EN54-20:2006 + AC:2008	
EVC-LASD 2	F05-83240		EN54-20:2006 + AC:2008	
EVC-Firebeam+	F05-83260		EN54-20:2006 + AC:2008	
Industrial Products				
OKB-3	F09-66010		ETL (UL STD 61010-1)	
CPC-3 Control Unit	F09-66011	AC 100v - 240v	ETL (UL STD 61010-1)	
Bases				
UB-4SD	F03-83510			
STB-4SE-SW-EV	F03-84010			
STB-4SE-SD	F03-82302			
UB-4	F03-83500			
STB-4SE	F03-82300			
Audio Visual Alarm Devices				
Banshee Base	F06-82500			
Alarm Bell 150mm (6")	F06-61023	24Vdc EN54-3		
Alarm Bell 200mm (8")	F06-61024	24Vdc W/P EN54-3		
StroBell Combination	F06-61200			
Banshee EXCEL Sounder	F06-82520			
Banshee EXCEL Sounder	F06-82525	IP66		
EXCEL LITE Xenon Red Sounder	F06-82510			
EXCEL LITE Xenon Red Sounder	F06-82515	IP66		
Xenon Beacon	F06-82550	24Vdc		
Manual Call Point				
RP-RSI-05/NTN	F06-62050	lalarm: 50mA @24v	EN54-11:2001 + A1:2005	None
RP-RSI-01-NTN	F06-62018	lalarm: 50mA @24v	EN54-11:2001 + A1:2005	None
WRP-R-01	F06-62009	lalarm: 50mA @24v	EN54-11:2001 + A1:2005	None
Intrinsically Safe Equipment				
EVC-PY-IS	F02-83300	Alarm Current <50mA @ 24v (externally limited by IS barrier)	EN54-7:2000 + A1:2002 + A2:2006 and Atex Certified	Omniview 360° LED
UB-4-IS Mounting Base	F03-83022			
KFD0-CS-EX1.51P	F05-83220			
KFD0SD2 EX1.1045	F05-83280			
KFD0SD2 EX2.1045	F05-83285			
EC0-90-PC	F05-83221			
IS Call Point	F06-61011			
IS Beacon	F06-82540	Red 24Vdc		
IS Sounder	F06-82530	100dBA		

Evolution Analogue Technical Specification



Description	Part Number	Operating Current	Standard	Alarm Indication
Smoke Detectors				
EV-P	F14-82100	Quiescent: 200µA / lalarm: (LED ON) 5.2mA	EN54-7:2000 +A1:2002 +A2:2006	Omniview 360° LED
EV-PS	F20-82501	Quiescent: 200µA / lalarm: (LED ON) 5.2mA	EN54-3:2001 +A1:2002 +A2:2006 EN54-7:2000 +A1:2002 +A2:2006	Omniview 360° LED
EV-DP	F14-82105	Quiescent: 200µA / lalarm: (LED ON) 5.2mA	EN54-7:2000 +A1:2002 +A2:2006	Omniview 360° LED
EV-DPH-A2R	F14-82106	Quiescent: 200µA / lalarm: (LED ON) 5.2mA	EN54-7:2000 +A1:2002 +A2:2006 EN54-5:2000 +A1:2002	Omniview 360° LED
EV-DPH-CS	F14-82107	Quiescent: 200µA / lalarm: (LED ON) 5.2mA	EN54-7:2000 +A1:2002 +A2:2006 EN54-5:2000 +A1:2002	Omniview 360° LED
EV-H-AIR	F15-82200, 62°C	Quiescent: 200µA / lalarm: (LED ON) 5.2mA	EN54-5:2000 +A1:2002	Omniview 360° LED
EV-H-CS	F15-82201, 92°C	Quiescent: 200µA / lalarm: (LED ON) 5.2mA	EN54-5:2000 +A1:2002	Omniview 360° LED
EV-PH	F20-82400	Quiescent: 200µA / lalarm: (LED ON) 5.2mA	EN54-7:2000 +A1:2002 +A2:2006 EN54-5:2000 +A1:2002	Omniview 360° LED
EV-FIREBEAM+	F16-83000	Quiescent: + Alarm 4.5mA	EN54-12:2002	
EV-ASD 1	F16-83100	Quiescent: 460µA	EN54-20:2006/AC:2008	
EV-ASD 2	F16-83110	Quiescent: 460µA	EN54-20:2006/AC:2008	
EV-LASD 1	F16-83200	Quiescent: 460µA	EN54-20:2006/AC:2008	
EV-LASD 2	F16-83210	Quiescent: 460µA	EN54-20:2006/AC:2008	
Audio Visual (AV) Devices				
EV-SDR	F16-82110	Quiescent: 200µA / lalarm: (Low O/P) 4mA (High O/P) 6mA	EN54-3:2001 +A1:2002 +A2:2006	
EV-AV2 Base	F14-85011	Quiescent: 200µA / lalarm: (Low O/P - SDR and BCN active) 9mA lalarm: (High O/P - SDR and BCN active) 12mA	EN54-3:2001 +A1:2002 + A2:2006	
EV-AV2 Flat Top	F14-85012		EN54-3:2001 +A1:2002 +A2:2006	
EV-PSBCN	F16-82016	Quiescent: 0µA / (BCN active) 6mA		
EV-HIOP-SB (SCI)	F16-82050	Quiescent: 200µA / lalarm: 20 mA	EN54-3:2001 +A1:2002 +A2:2006 EN54-17:2005/AC:2007 EN54-23:2010	
EV-HIOP-SDR (SCI)	F16-82060	Quiescent: 200µA / lalarm: 20 mA	EN54-3:2001 +A1:2002 +A2:2006 EN54-17:2005/AC:2007	
EV-HIOP-BCN (SCI)	F16-82056	Quiescent: 200µA / lalarm: 20 mA	EN54-17:2005 / AC:2007 EN54-23:2010	
Modules				
EV-IP	F16-82033	Quiescent: 500µA / lalarm: 4.5mA	EN54-18:2005/AC:2007	Red LED
EV-OP	F16-82027	Quiescent: 500µA / lalarm: 4.5mA	EN54-18:2005/AC:2007	Red LED
EV-SIO	F16-82031	Quiescent: 300µA / lalarm: 3mA	EN54-18:2005/AC:2007	Red LED
EV-SCM	F16-82029	Quiescent: 750µA / lalarm: 4.5mA	EN54-18:2005/AC:2007	Red LED
EV-ZMU	F16-82023	From addressable loop: From External PSU: Class B Quiescent: 280µA Class B Quiescent: 14mA Class B lalarm: 50mA / spur	EN54-18:2005/AC:2007	Red LED
EV-MINI I/P	F16-82025	Quiescent: 460µA lalarm: (No LED) 460µA lalarm (LED ON) 4.5mA	EN54-18:2005/AC:2007	Optional Red LED
EV-SBM	F16-82028	From External PSU Quiescent: 85mA / lalarm: 90mA + Sounder load (Max 15A)	EN54-18:2005/AC:2007	Red LED
EV-240v MRA	F16-82024			
Isolators				
EV-B-SCI Isolator Base	F16-83605	Iq 60µA/Operated 13mA	EN54-17:2005/AC:2007	Yellow LED
EV-DIN-SCI Isolator Base	F16-83620	Iq 60µA/Operated 13mA	EN54-17:2005/AC:2007	Yellow LED
Bases				
UB-6-EV	F03-83521			
STB-4SE-EV	F03-84005			
Manual Call Points				
EV-MCP2-SCI-IP24	F16-82200	Quiescent: 200µA / lalarm (LED ON): 2.2mA	EN54-11:2001 + A1:2005 & EN54-17:2005/AC:2007	Red LED
EV-MCP2-SCI-IP67	F16-82205	Quiescent: 200µA / lalarm (LED ON): 2.2mA	EN54-11:2001 + A1:2005 & EN54-17:2005/AC:2007	Red LED



Evolution Analogue Technical Specification

Description	Part Number	Operating Current	Standard	Alarm Indication
Accessories				
EV-AD2-EXT	F17-78003			
EV-Module Address Lead	F16-82034			
EV-PRADAPT	F05-83234			
EV-AVADAPT	F05-83235			
Universal Addressing Lead	F16-82045			
Module Address Lead Spare Pin Kit	F16-82035			
Back Box	F06-62007			
Hinged Clear Cover	F06-62008			
3 Way Terminal Tray	F06-62006			
Flush Wall Mounting Plate	F06-62005			
Flush Mounting Box Interface	F05-83228			
Plastic Surface Box	F05-83231			
STA-R1 Remote Indicator	F05-83200			
UG-3	F05-83105			
IP55 (Base)	F16-81373			





Description	Part Number	Operating Current	Standard	Alarm Indication
Detectors				
ST-PY-AS	F14-82100	Alarm Current (LED on) 5.2mA	EN54-7:2000 +A1:2002 +A2:2006	Omniview LED Indicator
ST-H-AS	F15-81200	Alarm Current (LED on) 2mA	EN45-5:2000 +A1:2002	Red LED
AS-ABS Sounder	F16-81563	Alarm Current (active) 7-10mA (Tone dependent)		
UB4-EV-AB	F03-83020			
Red Cover Plate	F06-82411			
White Cover Plate	F06-82410			
Modules				
MCM-AS5	F16-81540	Quiescent: 18.5µA / Alarm: 37.5mA. Current can be shared with Ext Psu if required		
SCM-AS5	F16-81530	Quiescent: 3.3µA / Alarm: 4.5mA		
1OASBOX	F16-81510	Quiescent: 3.3µA / Alarm: 4.5mA	EN54-17:2005 /AC:2007	
1IASBOX	F16-81500	Quiescent: 3.3µA / Alarm: 4.5mA	EN54-17:2005 /AC:2007	
Bases				
SCI-5	F16-81441	Iq 300µA Operated 15mA		Yellow LED
SCI-6	F16-81440	Iq 300µA Operated 15mA		Yellow LED
UB-4	F03-83500			
UB-4-EV-AB	F03-83020			
Manual Call Point				
AS-MCP	F16-82303	Iq 300µA Alarm Current (LED on) 4mA		Red LED
AS-MCP-WP	F16-82305	Iq 300µA Alarm Current (LED on) 4mA		Red LED
Conventional Products				
ST-P-OM	F02-82220	Alarm Current 65mA @ 24v (externally limited)	EN54-7:2000 +A1:2002 +A2:2006	
STB-4SE-SW-STD	F03-82401	Savwire Base for ST detectors		
STB4-SE-12VR	F03-82320	12V		
STB4-SE-24VR	F03-82330	24V		
STB4-SE-12VRL	F03-82325	12V		
STB4-SE-24VRL	F03-82326	24V		
UB-4SDR-470	F03-83512	12V		
UB-4R-470	F03-83503	24V		
Accessories				
MTM AS Programmer	F17-78002			
STA-R1	F05-83200			
UG-3	F05-83105			
IP55 Base	F16-81373			
IP55 Mounting Box	F16-81372			



NITTAN • tel: +44 (0) 1483 769555 • email: sales@nittan.co.uk • web: www.nittan.co.uk
Nittan Europe Limited. Hipley Street Old Woking Surrey GU22 9LQ

5781 05.15